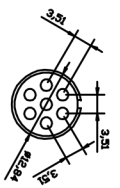
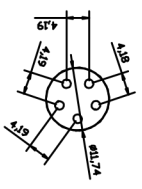
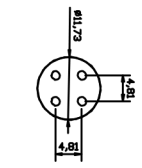
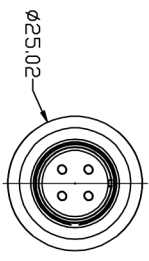
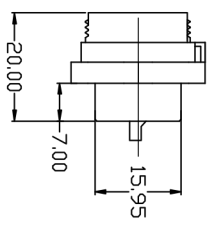
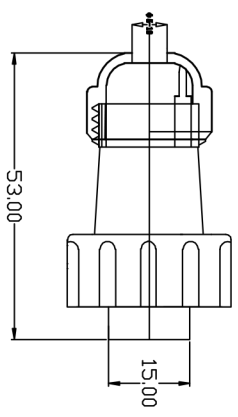
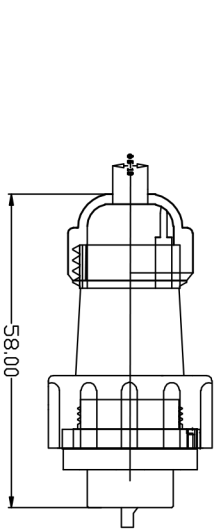


REV. 6	ECH. NO. 6	REV. No 7	REVISER 777	APPD. 8
PP	ECH. PP	PP	PP	PP
F21	DRAWING			

适用 $\phi 5-10$ 线缆



- 技术要求:
1. 引脚应排列整齐, 要求无偏位现象。
 2. 外观应无明显缺陷, 如: 熔接痕、缩孔、颜色不一致等。
 3. 可焊性应符合要求
 4. 线规直径: $\leq 0.785\text{mm}/18\text{mm}$
 5. 接触电阻: $5\text{m}\Omega$
 6. 工作电压: 500V
 7. 接线方式: 焊接
 8. 电流: 1.5A
 9. 接触直径: $\phi 1*4/5/7/9$

>120	± 0.50	TYPE NO. 型号: SP177法兰 4-9芯	TITLE: ASSEMBLY 装配图
>30~120	± 0.30	APPD. 设计: DR. 设计:	DWG. NO.: KNT-FL-20
>8~30	± 0.20	CRKD. 审核:	SCALE: FULL
0~6	± 0.10	ANGLE $\pm 1'$	PAGE: 1/1
			REV.: F20