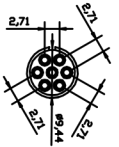
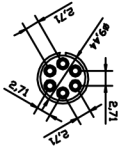
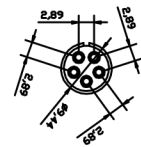
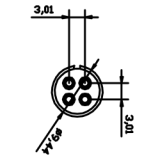
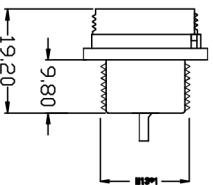
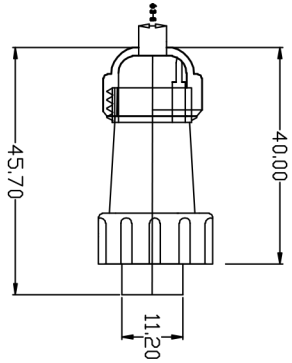
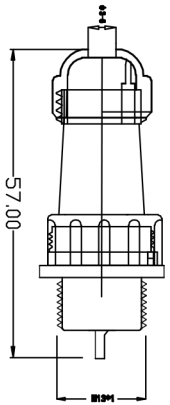


REV. 6	ECON. NO. 1	REV. No 7	REVERSER 1	APPD. 8
PP	ECON. PP	PP	PP	PP
F21	DRAWING			



适用 $\phi 3-6$ 线缆

技术要求:

1. 引脚应排列整齐, 要求无偏位现象。
2. 外观应无明显缺陷, 如: 熔接痕、缩孔、颜色不一致等。
3. 可焊性应符合要求
4. 线规直径: $\leq 0.785\text{mm}/18\text{mm}$
5. 接触电阻: $5\text{m}\Omega$
6. 工作电压: 200V
7. 接线方式: 焊接
8. 电流: 5A
9. 接触直径: $\phi 1/4/5/6/7$

TYPE NO.	型号: 4-76	TITLE	ASSEMBLY
APPD.	设计: 4-76	DWG. NO.:	KNT-TL-20
CHKD.	审核:	SCALE:	比例: FULL
DR.	设计:	PAGE:	页码: 1/1
		UNIT:	单位: [mm]
		REV.:	版本: F20

>120	± 0.50		
>30~120	± 0.30		
>8~30	± 0.20		
0~6	± 0.10	ANGLE	$\pm 1^\circ$